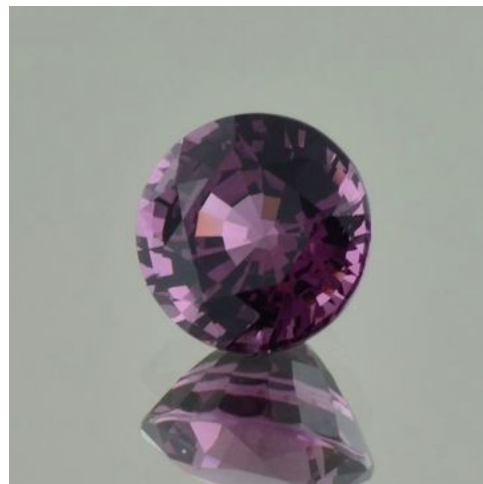


GEMSTONE REPORT

Name:	Spinel
Origin:	Myanmar (Burma)
Weight:	4,83 ct.
Clarity:	very small inclusions
Shape/Cut:	round faceted
Measures:	9,81-9,90 x 6,95 mm
Color:	slightly violet purple
Treatment:	Untreated
Retail-Price:	€ 3.400,-



Mixed round cut pinkish purple (medium to dark tone) Spinel displaying high brilliance. Accompanied by GLA gemstone report stating this Spinel has not been heated and also confirming retail value of Euro 3.400,-.