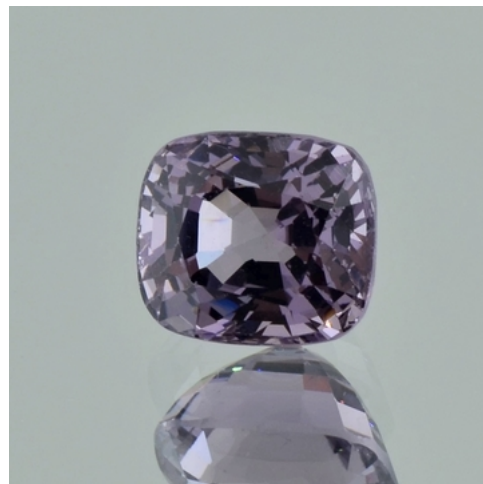


## GEMSTONE REPORT

|               |                       |
|---------------|-----------------------|
| Name:         | Spinel                |
| Origin:       | Myanmar (Burma)       |
| Weight:       | 4,03 ct.              |
| Clarity:      | tiny inclusions       |
| Shape/Cut:    | cushion faceted       |
| Measures:     | 9,08 x 7,93 x 6,63 mm |
| Color:        | grayish lilac         |
| Treatment:    | Untreated             |
| Retail-Price: | € 1.700,-             |



Very good modified cushion cut Spinel with greyish lavender colour and fine brilliance. Accompanied by GLA gemstone report stating this Spinel has not been heat treated and also confirming retail value of Euro 1.700,-.